



Newsletter – No. 14 10th December 2021

Message from Mrs. Mole

We definitely seem to be in the Christmas spirit at Polesden Lacey Infant School. Last week we had the excitement of Father Christmas' visit and making morning (hopefully your houses are adorned with the fabulous decorations that the children made). This week we were delighted to see the children coming into school with their beautiful Christmas Jumpers on Tuesday. It was a day jam packed with fun. In the morning, the Puppets came to tell us the Christmas Story as seen from the perspective of a rather grumpy Inn Keeper. We then ate a delicious Christmas lunch prepared by Jemma and Katie in the kitchen. All of the staff spent time in the hall and ate their Christmas lunches with the children. Children were waving to the staff to show them that there was a space on their table and calling them to sit with them. Once lunch was finished it was quickly followed by Christmas in the classroom. An incredible feat of organization that ran amazingly smoothly (photos below in the newsletter). It was all finished off with children listening to parents reading stories wherever they could find a space in the school. It may have been pouring with rain outside but inside was full of fun and lots of happy faces. Another newsletter and another thank you to The Friends of Polesden Lacey Infant School.

Next week we are looking forward to the Christmas Productions. The rehearsals are going really well, children have been busy learning lines, I have seen all the costumes coming in and as always the singing sounds magical. We are looking forward to welcoming you in to see your child or children and I know from talking to the children that they are looking forward to performing for you.

Have a great weekend and I look forward to seeing as many of you as possible next week.

Take care and stay safe,

Rebecca Mole, Headteacher

Star of Week

Well done to all the winners this week.

Rabbits: **Ellie C** for super singing in the play rehearsal and helping others with their costumes

Squirrels: **Kitty** for working hard to improve her reading

Badgers: **Calvin** for focusing well and working hard in lessons



Values Leaves

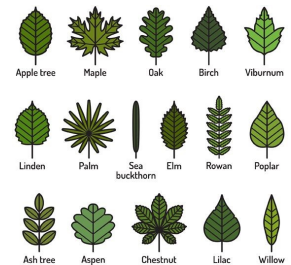
At Polesden Lacey Infant School we like to celebrate the different ways that children and adults show our school values of being **Fair, Resilient, Respectful, Caring, Courageous and Curious**.

If you see your child doing anything that you think shows one of our Values please write it on a leaf and send it into school. Rather than sending pre-cut leaves home from school please could you cut out a leaf and write the reason on it. Maybe you could pick a shape from leaves of different trees. Each class will have a box to put the 'Values Leaf' in and they will be shared with the class during the week.

Below are this week's leaves:

Freddy sat with his little brother Harry and taught him how to write his letters and how to hold his pen correctly.

Florence showed curiosity for number! She wanted to do extra maths.



Green Santa's present list for the planet (From Surrey CC)

Green Santa's back! As well as wishing us all a merry old time, he has a Christmas wish too - please give a gift to the planet as well as your family and friends.

That means avoiding cards with batteries and glitter and steering clear of wrapping paper with a foil or plastic lining. To stay in Green Santa's good books this year, you can:

1. Recycle all your cardboard mince pie, biscuit, and chocolate boxes.
2. Empty, rinse and dry all food and drink packaging before it goes in your recycling bin – and place all items loose not bagged.
3. Fold and recycle cardboard such as delivery and toy boxes to make more room in your recycling bin.
4. Place all paper cards, envelopes and wrapping (that are glitter, foil and plastic free) in your recycling bin.
5. Place unrecyclable items such as polystyrene, bubble wrap, and plastic film in your rubbish bin. If in doubt, check it out with the Surrey Recycles search tool or app.
6. Plan your party food in advance and freeze any cooked or uncooked food you didn't get around to eating.
7. Get creative with your leftovers, why not try out some of our delicious recipes.
8. Put food that can't be eaten, like bones, eggshells and peelings into your food caddy.

Remember that any unwanted gifts like clothes and small electricals and batteries need to be recycled separately, not placed in your recycling bin.

Christmas in the Classroom

What fun we all had! Thanks again to The Friends for organising and the parents who volunteered.



Puppet assembly

We had a wonderful visit from the puppets again and they told us the story of the first Christmas



Parent Reading

Mrs. Binding arranged for parents to come into school for the last part of the day on Tuesday and read a couple of stories to the children. The children could choose who they went to listen to and seemed to love the experience. Many thanks to all those who volunteered. It is definitely something that we will do again.



Year 1 Trip

Year 1! Had a lovely time at the Victorian Playrooms in Guildford.



Some Christmas art work

Christmas tree from Squirrel's Forest School



A Nativity Scene by Harrison



Applications for Reception 2022

We are delighted that we have been able to show over 40 prospective parent families around our amazing school (all in small groups to ensure that we were following Government guidance and keep everyone in school and visiting safe). We have two more tours running in January, Wednesday 5th at 1.30pm and Thursday 6th at 10.30am.

If you know of anyone who is looking for a Reception place for September 2022, please do signpost them to us. Tours can be booked by calling the school office on 01372 456533 or emailing office@polesdenlaceyinfant.surrey.sch.uk

Applications for Year 3

Much as we would love to keep your children with us at Polesden Lacey Infant School, the time has come for you to consider the choice of Junior school for the next stage in your child's educational journey.

Below you will find the information from the Surrey Admissions team (<https://www.surreycc.gov.uk/schools-and-learning/schools/admissions/primary-junior-and-infant/apply>) about the process.

Although we are unable to guide you with regards to choice of school we are more than happy to help with the process so if you do have any questions please ask. Applications close on 15th January 2022.

Christmas tree voucher

The Vineries Garden Centre have once again provided us with a 10% off voucher when you purchase a real Christmas tree with them. The voucher below will entitle you 10% off your purchase and the Vineries will donate 50p to the school for every voucher they get back with our school's name on it.

THE VINERIES GARDEN CENTRE LOWER ROAD EFFINGHAM

CHRISTMAS TREE VOUCHER ON PRODUCTION OF THIS VOUCHER 2021

10 % OFF YOUR CHRISTMAS TREE

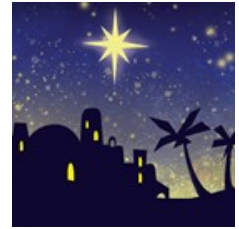


EFFINGHAM, SURREY. KT24 5JP. 01372 458934 (this voucher cannot be used in addition to club members discount)

Christmas Performances

We are really looking forward to welcoming you to our Christmas performances.

This year there are three shows, one for each class. This is to ensure that we are able to provide socially distanced seating in the hall for everyone. We are aware that some parents will wish to attend more than one show as they have children in different classes, this is absolutely fine. We will not be issuing tickets this year but are restricting numbers to no more than 2 people per family. **We request that you do not bring siblings, unless they are one of your two tickets.**



The Reception and Year 2 show will take place on the 14th December, the Year 2 show is first starting at 9.30am to 10.15am (approximately). We will then ask everyone to leave whilst we set up for the Reception show and doors will reopen at 10.30am (approximately) ready for the show to start at 10.45am.

The Year 1 show will take place on 15th December starting at 9.30am to 10.15am (approximately).

This year we are asking that parents only attend the shows that their children are performing in so that we can keep numbers down and the school community safe.

In accordance with Covid guidelines the seating will be socially distanced and we ask that you only sit with members of your own family, the windows and doors in the hall will be open to allow for ventilation and if you are not exempt we would ask that you wear a face mask. Hand sanitizer will also be available on your arrival.

Can we also ask you to take a lateral flow test on the evening before or morning of the performance, if you are showing any covid symptoms please do not come along.

Last few days for you to bring in your fantastic Christmas cards.

Back in 2010 the children of Polesden Lacey Infant School had a great idea to save waste at Christmas and we have decided to continue this tradition as we have done for the past 10 years. They decided to only send one card to the whole class. The card is shared and displayed on a board in the classroom.

Cold in School

Please be aware that in compliance with the Covid guidelines we have the windows and doors open throughout the school day to increase the amount of ventilation in all areas. This includes the classrooms, school hall, library and offices. As a result it can get quite chilly in school and especially in Reception Class as the classroom door is open for most of the day, although to be fair most of the children don't seem to feel it! If your child feels the cold you might like to dress them with extra layers to keep them warm in class, as well as hats, scarves and gloves for lunch and playtimes.

Fairtrade Alphabet

E is for education.

One of the benefits of Buying Fairtrade is that the Fairtrade Premium that workers and communities receive is invested into Education. Over and above the Fairtrade price, the Fairtrade Premium is an additional sum of money which goes into a communal fund for workers and farmers to use – as they see fit – to improve their social, economic and environmental conditions.

It has been used to provide Education grants, buy resources for schools and even to set up a new primary school.

Dates

Autumn Term 2021

14th December 9.30am Year 2 Christmas Performance

14th December 10.30am Reception Christmas Performance

15th December 9.30am Year 1 Christmas Performance

Last day of Term; 17th December 2021 school closes at 1pm

Spring Term 2022

4th January INSET Day

5th January All children return to school

14th February—18th February Half Term

1st April; Last day of term school closes at 1pm